

RICE HYDRO, INC.
MANUFACTURER'S OPERATING INSTRUCTIONS
EL-SERIES MODEL TEST PUMPS

FOR WARRANTY REGISTRATION CALL 800-245-4777.

CONNECTING THE PUMP:

1. With switch in off position, connect power cord on motor to standard wall Outlet. Extension cord: when needed, a 12 gauge 3 wire, **max 25 foot length**, plugged into a 20amp breaker is required.
2. Connect **CLEAN** pressurized water source to the inlet of the pump. *It is recommended that the unit be pressure fed.* For gravity feed locate water within 8 feet and above level of unit, and then prime the pump.
3. Connect high-pressure outlet hose to the pump and your test environment.

OPERATING THE PUMP:

1. Turn the outlet ballvalve to the open position, start the motor.
2. The pressure regulator has been preset at factory. **To change this setting you must make this adjustment while the water is flowing freely, under no pressure.** To adjust pressure, first loosen the locknut. Turn the **T-handle/knob** clockwise to increase and counter-clockwise to decrease the pressure. Place a ballvalve or similar open and close valve at the end of the outlet hose, open and close ballvalve to check pressure setting and re-adjust as necessary. After any adjustments on regulator, bleed off system / test environment to "0" PSI; restart the test from "0" ensures the most accurate reading of pressure. It also recommended that you **OFTEN** open and close the RICE bleed valve to remove excess air from piping and ensure accurate pressure readings. Once desired setting is reached, **IT IS VERY IMPORTANT THAT YOU RE-TIGHTEN THE LOCK/JAM NUT,** do not leave adjustment handle free to move or vibrate out of setting. If unloader valve handle does fall out see attached diagram to replace parts correctly. **CAUTION: IT IS VERY COMMON TO REPLACE POPPET/BUTTON BACKWARDS, THE LONGER LEG WITH STEEL BALL FACES AWAY FROM THE SPRING.** With the ballvalve open begin building pressure in test environment. Bleed air thru RICE bleed valve at least once during this process. Once test pressure has been reached, **shut off motor and close ballvalve.**
3. Once the outlet ballvalve is closed and your test begins, you have now isolated the test pump from your test environment; any loss of pressure is due to leaks or trapped air in the line.

REMEMBER THESE CAUTIONS:

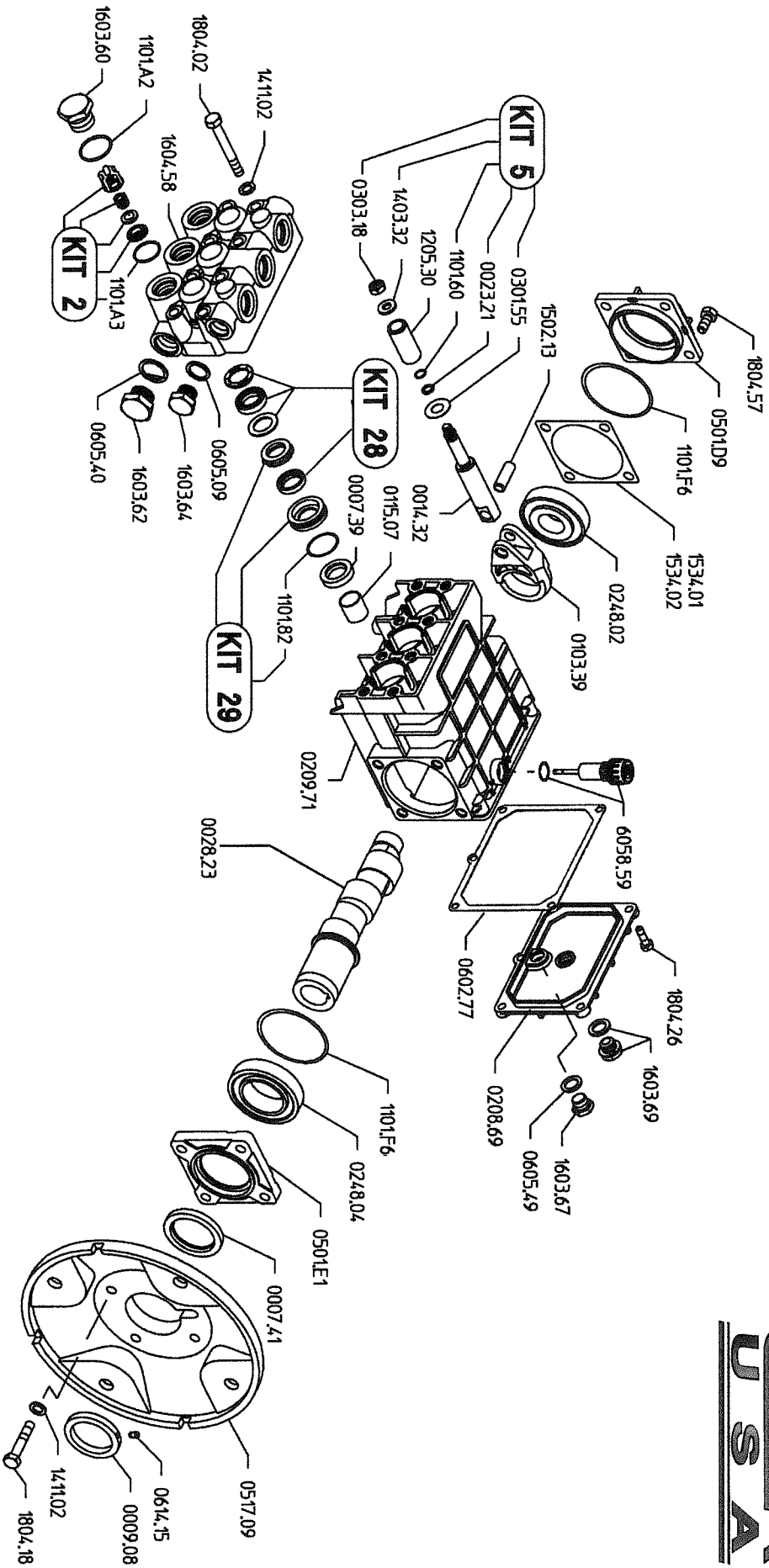
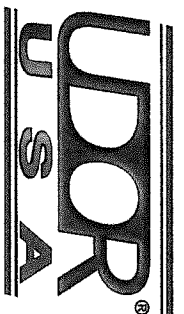
1. Power source must match voltage requirement of electric motor and if needed an Extension cord of at least 12 gauge wire.
2. Use a sound 3/4" or larger supply hose.
3. DO NOT run dry or pump chlorine through the unit.
4. Protect the pump from freezing, FLUSH with anti-freeze.

MAINTENANCE:

1. Plunger pumps use non-detergent 30wt oil.

Revised 10-1-2005

MD 5.0/25-U



MD 5.0/25-U Quick Reference

Maximum Flow	5.0 GPM	Valve Kit	04-KIT UD-2
Maximum Pressure	2500 PSI	Seal Kit	04-KIT UD-28
Rated Pump Speed	1750 RPM	Brass Kit	04-KIT UD-29
Oil Capacity	20 oz. UDOR LUBE or SAE 30W	Plunger Bolt Kit	04-KIT UD-5
		Plunger Part #	04-1205.30
		Plunger Diameter	18 MM

PARTS BREAKDOWN FOR MODEL EL5/500
RICE HYDRO, INC.

PART NUMBER..	DESCRIPTION..	QTY REQ'D
UD04-0007.39	SEAL	6
UD04-0007.41	SEAL	1
UD04-0009.08	SHAFT COLLAR	1
UD04-0014.32	PLUNGER ROD M SERIES	3
UD04-0023.21	SUPPORT RING	3
UD04-0028.23	CRANKSHAFT	1
UD04-0103.39	ALUMINUM CONNECTING ROD "M"	3
UD04-0115.07	ROD GUIDE M SERIES	6
UD04-0208.69	BACK COVER M SERIES	1
UD04-0209.71	CRANKCASE M & MKC SERIES	1
UD04-0248.02	BEARING	1
UD04-0248.04	BEARING	1
UD04-0301.55	SLINGER RING	3
UD04-0303.18	PLUNGER NUT	3
UD04-0501.D9	BEARING CAP	1
UD04-0501.E1	BEARING CAP	1
UD04-0517.09	FLANGE M SERIES	1
UD04-0602.77	GASKET BACK COVER M SERIES	1
UD02-0605.09	GASKET	1
UD04-0605.40	GASKET	1
UD04-0605.49	WASHER	1
UD04-0614.15	SET SCREW	1
UD04-1101.A2	O-RING	6
UD04-1101.A3	O-RING	6
UD04-1101.F6	O-RING	2
UD04-1101.60	O-RING	3
UD04-1101.82	O-RING	3
UD04-1205.30	PLUNGER 18 MM	3
UD04-1403.32	PLUNGER WASHER	3
UD04-1411.02	WASHER	8
UD04-1502.13	CONNECTING ROD PIN	3
UD04-1534.01	SHIM .003	1
UD04-1534.02	SHIM .010	1
UD04-1603.60	VALVE CAP M SERIES	6
UD04-1603.62	INLET PLUG 3/4"	1
UD04-1603.64	DISCHARGE PLUG 3/8	1
UD02-1603.67	OIL PLUG	1
UD04-1603.69	OIL SIGHT GAUGE	1
UD04-1604.58	MANIFOLD M SERIES 18 MM	1
UD04-1804.02	BOLT	8
UD02-1804.18	BOLT	4
UD04-1804.26	BOLT	4
UD04-1804.57	BOLT	4
UD04-6058.59	OIL DIP STICK M SERIES	1

MISC :

MOTOR-EL-500	2 HP, 1 PHASE 110/220 VOLT
MOTOR-CFACE-EL-5/500	C-FACE KIT
PUMP-5/800/E	PLUNGER PUMP
GAUGE-600	0-600 LIQUID FILLED GAUGE
HOSE-1/2X8-RH	8 FOOT OUTLET HOSE
FITTING-1/2-MPIPE	MALE PIPE FITTING
FITTING-1/2-MPX	MALE PIPE SWIVEL
HOSE-1/2-2500XFT	SPECIFY LENGTH OF HOSE
COUPLERBODY-1/2	FEMALE CONNECT TO OUTLET HOSE
COUPLERPLUG-1/2	MALE OUTLET TO PIPING
VALVE-RELIEF-500PSI	PRESSURE REGULATOR - BLUE SPRING
HOSESWIVEL-1/2	1/2 X 3/4 HOSESWIVEL

KITS:

UD04-KIT-UD2	VALVE KIT
UD04-KIT-UD5	PLUNGER BOLT KIT
UD04-KIT-UD28	SEAL KIT
UD04-KIT-UD29	BRASS KIT

**Prices are subject to change without notice **

Revised 09/01/14